



Vashi Rly. Stn.

Mind Space IT Park

www.neelsidhi.com



# A DEDICATED CORPORATE HOUSE WITH AN ADVANTAGE OF NERUL'S MOST STRATEGIC LOCATION

PRESENTING



CORPORATE HOUSE, NERUL

## PRIME LOCATION:

- Opp. 25 Acre Wonder Park
- NMIA (Navi Mumbai International Airport) - 4 Kms
- Sion Panvel Highway & Palm Beach Road - 1 Km
- Seawoods & Nerul Rly. Stn. - 1.5 Kms
- Apollo Hospital - 0.7 Km
- CBD Belapur NMSEZ, JNPT Port & IT Parks in vicinity

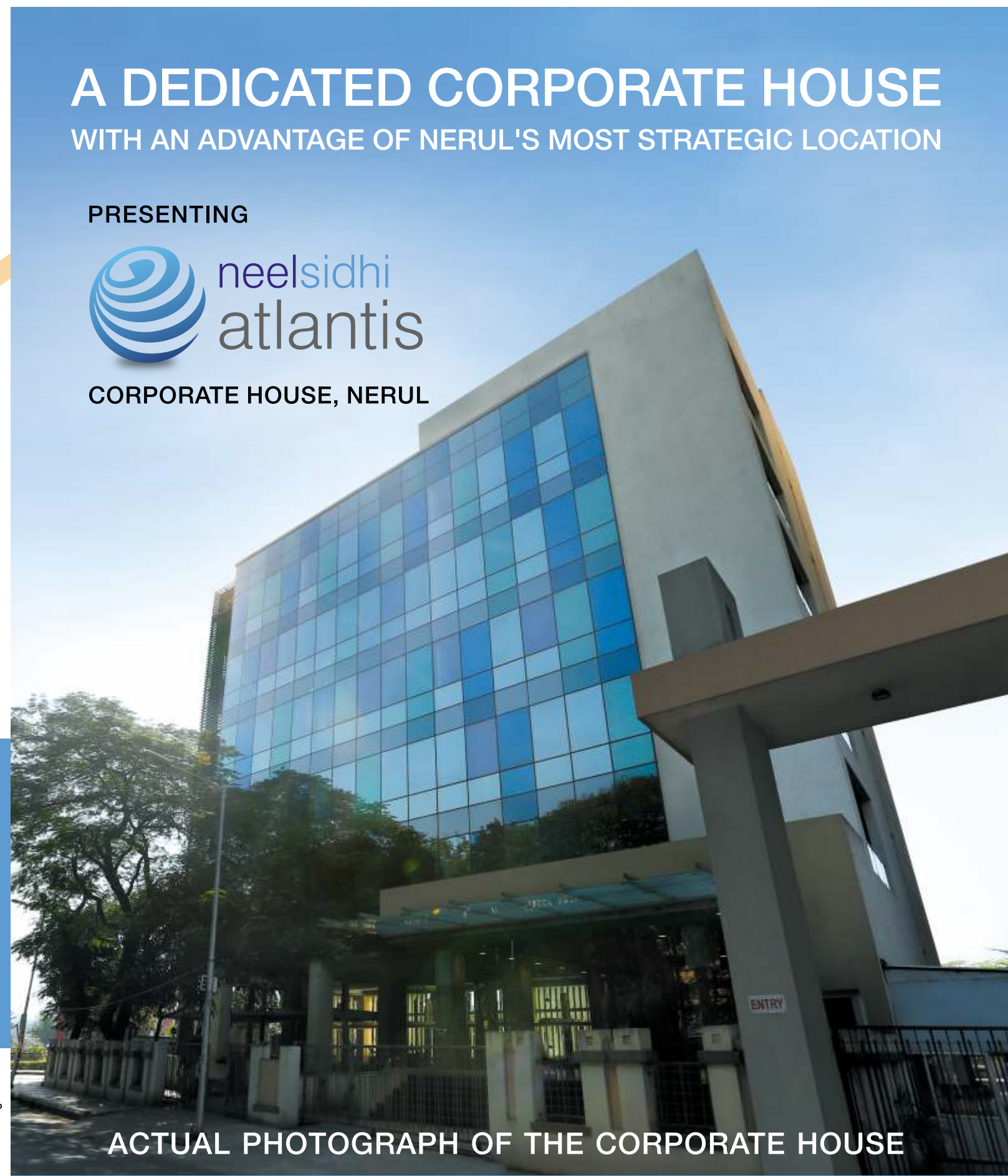


Call: 90049 91151, 2788 5000

Site Address: Plot No - 49/1, Opposite Wonder Park, Sector - 19 / A, Nerul, Navi Mumbai.

Corporate Address: The Emerald, 2nd Flr., Plot No. 195-B, Sector-12, Vashi, Navi Mumbai | Email: info@neelsidhi.com

thoughttrains



ACTUAL PHOTOGRAPH OF THE CORPORATE HOUSE

READY POSSESSION | OC RECEIVED

**A GRAND WELCOME  
TO YOUR NEXT  
CORPORATE ADDRESS**

**NEELSIDHI ATLANTIS  
AN ALL 'ADVANTAGE' BUSINESS ADDRESS**

**PROJECT HALLMARKS:**

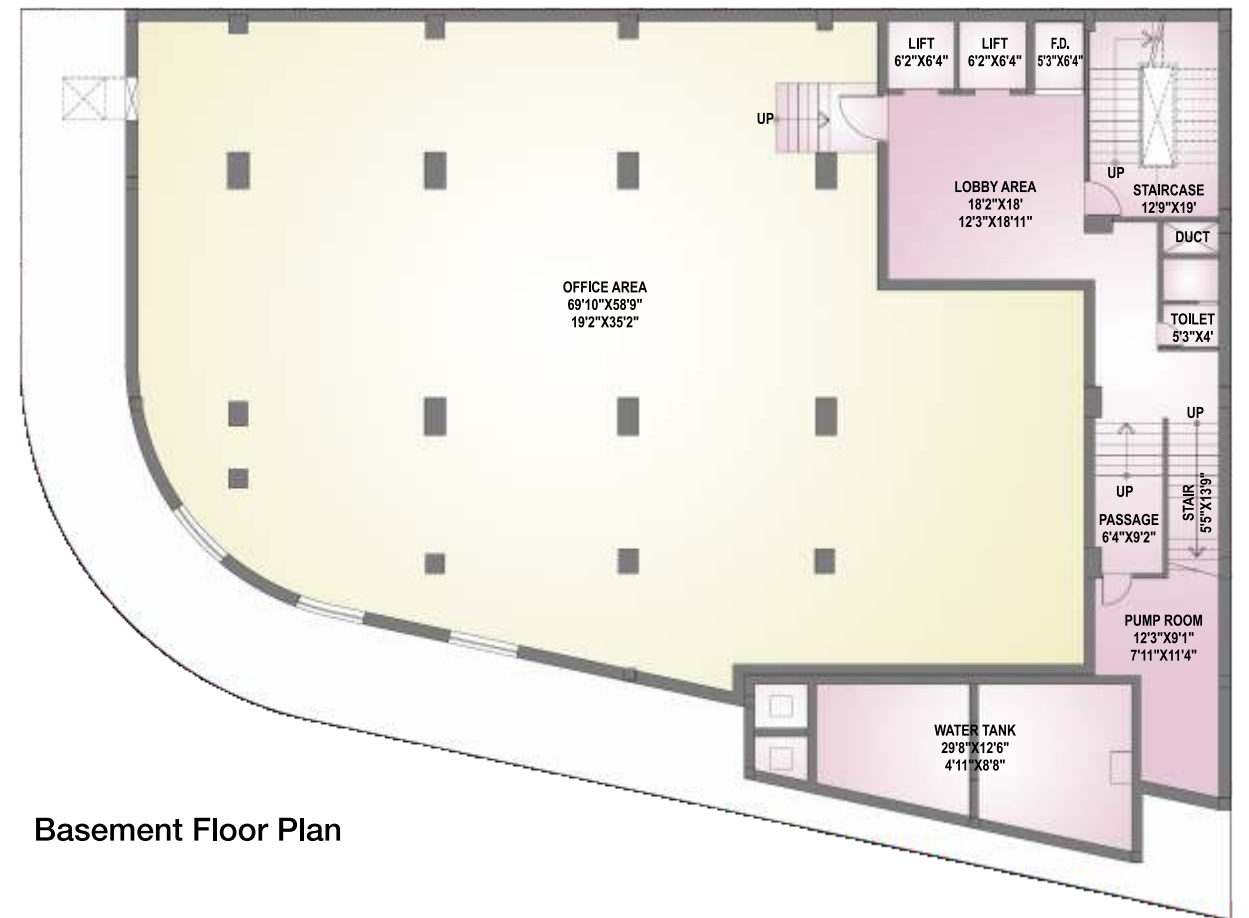
- Basement + Stilt + 5 Levels • Designer Glass Façade • Grand Air-Conditioned Entrance Lobby

**SPECIFICATIONS:**

- Vitrified Flooring • Concealed Plumbing with Good Quality C. P. Fittings
- Copper Wiring with Modular Switches • Granite Platform and Stainless Steel Sink in the Pantry
- Exclusive Designer Tiles up to 7ft Height with Designer Sanitaryware in Toilets
- RCC Structure Building • 2 Schindler make Auto Lifts • D.G. Back-up with Fire-fighting System

**ACTUAL PHOTOGRAPHS**

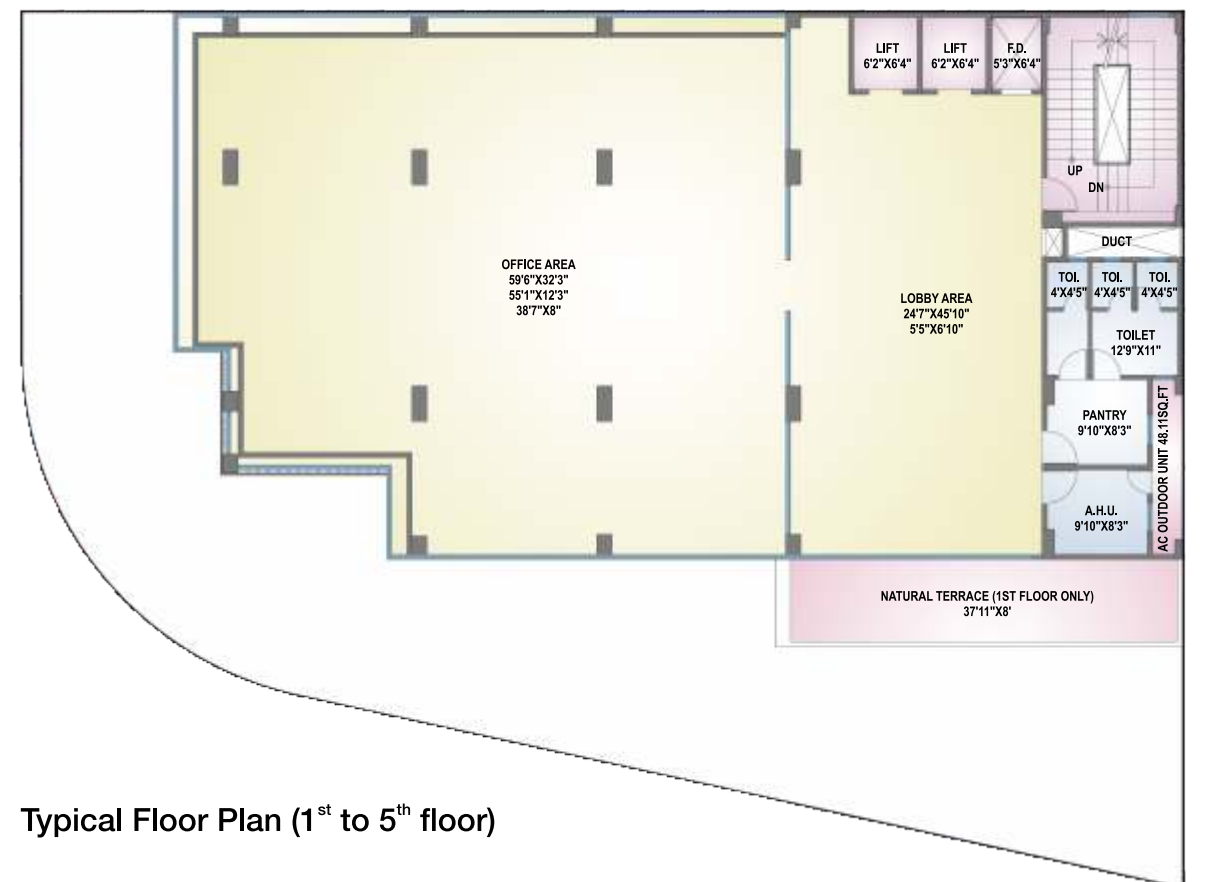
**WELL-PLANNED MULTIPURPOSE AREAS**



**Basement Floor Plan**



**WELL-EQUIPPED WORK SPACES WITH LAVISH LOBBY,  
LIFTS, PANTRY & WASHROOMS**



**Typical Floor Plan (1<sup>st</sup> to 5<sup>th</sup> floor)**

